

Be careful not to get
too close to the artwork!

YAYOI KUSAMA MUSEUM

草間彌生美術館

Museum Exploration Worksheet

2nd
Floor

● Let's look for "love" in these images!

Both of these paintings below have the words *EVERY DAY I PRAY FOR LOVE* in the title.

Where can you see "love" ?



What does "love" mean?
Does it mean "to like" ...?
A ♡ symbol?

Circle what you find!

Is it here... ?



What do you see?
Look at the paintings
on the wall!

● Why do you think so? Write your reasons here!

I see "love" here because...

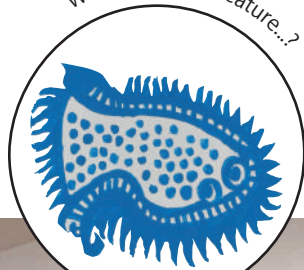
Let's turn
to the back!

● Let's look for your favorite objects!

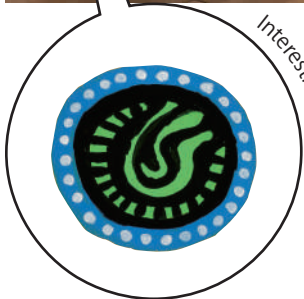
3rd
Floor

Look at the artworks
really carefully!

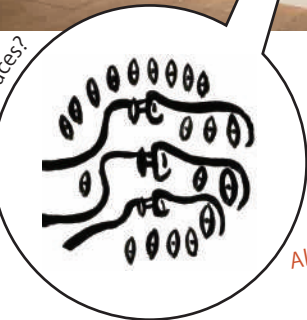
What is this? A creature...?



Interesting pattern...



Peoples' faces?



All kinds of objects are hiding!
There are many more!

Draw your favorite objects here, however you'd like!

What objects do you see?
What do they look like?